

Port Washington Federal Credit Union

Financial participation can make saving your money fun

News and Notices

Now is a good time to open or add to your IRA Account.

October 2020



157 Main Street

Port Washington, NY 11050

516 883-3537 • Fax 883-3513 • MSL line 883-3438 • www.pwfcu.org

Monday 8:30 - 3:00
Tuesday 8:30 - 3:00
Wednesday 8:30 - 3:00
Thursday 8:30 - 6:00
Friday 8:30 - 3:00
Saturday 9:00 - Noon

Port Washington Federal Credit Union Board of Directors

Steven Belanich
President
John Melillo
Vice President
Robert Bonnie
Treasurer
Stephen Cardeilo
Secretary
Walter Hinck
Judith Scallon
Renee Laffer

Credit Union Staff

Michael Fitzgerald
General Manager
Ana Campos
Credit Union Supervisor
Christian Alavayero
Loan Officer
Alice Melzer
Director of Marketing
Debbie Olsen
Head Teller

Member Service Representatives

Christian Raymos
Matthew Hickson
Raymundo Albano
Saul Bonilla

Remember: When the Credit Union is closed, Members can access cash and information using their ATM/Debit Cards, On-line banking and MSL (audio response) line.

For additional information please call: 516 883 8537



Our "Back to School Raffle Ticket" netted a huge and happy suprise...

Go Green. Go Paperless.
Save a Tree or Two.

Sign up for paperless statements which are available on our website when you sign into our On-line banking.

PWFCU's newsletter is on our website: www.pwfcu.org

Opt out of "snail mail" by giving your email address to our staff. They will add it to your file. We will only use it to send you occasional special PWFCU promotions.

For Members who want to use our OnLine banking - after we set it up for you, you can log-in and do your banking as needed.

Try it. You'll Like It!
Bill Pay is Here

(Members really use and like it.)

Welcome to our free digital banking service. Use it to pay bills on-line, set-up recurring payments and keep track of your money. **How to do it?** Call our staff: (516) 883 3537. Request Bill Pay. Once it is set up sign into OnLine Banking. Click on the three bars in the upper left corner. Then click onto billpay located in the middle of the pop-up box. This will take you directly into our Bill Pay System.

We will be closed Monday, October 12th, for Columbus Day.



Holiday Club

Disbursements are Ready

Throughout the year funds in your Holiday Club have been silently growing. Disbursements start on October 13th and the next Holiday Club begins on October 15th. This is a great club to belong to. There are no meetings to attend or committee assignments. Our club motto is: "Saving money is simple." After you join this club, your monthly Deposits can be delivered in person or electronically or over the phone. Best of all, you will gain interest on this Account.

Member Owned and Value Driven

We believe the most important service we can provide is direct contact. When you have a question call or stop by our office.

Some of our many services:

Certified Checks, Direct Deposit, Payroll Deduction, Money Orders, Notary Service, Wire Transfers

24 Hour Audio Response
On-Line Banking with Bill Pay

PWFCU's "Check Image" is an additional free service. Use it with our Online Banking.

Outside ATM
Convenient Mid-Main Street Location

This Country was built on innovative; start up companies. And it is why we welcome Small Businesses and Organizational Accounts. These Accounts come with Checking options including: Overdraft, Employee Direct Deposit and other features and benefits.

Perhaps we can help you plan your next small business or Non-Profit Organization.

Call or click today.

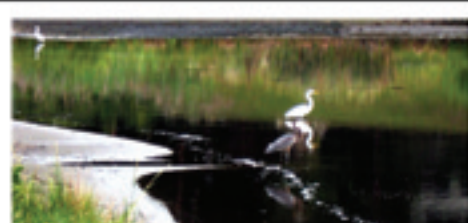
516 883 3537

www.pwfcu.org

We added another service.

Use it with your cell phone or on your computer. View both the front and back of a check On-Line. Save the image as needed. This is faster than waiting for a paper copy. It is useful for anyone in a hurry. Sign up for it today.

Trick or Treat!!!
Here is a treat for our member's children. The "Big Pumpkin" will show up soon.
Make sure to put in one free raffle ticket per child.



The Port Washington Federal Credit Union welcomes all of those who live, work or worship in Port Washington, Manhasset, Roslyn, Great Neck and the employees of the Town of North Hempstead.

Shopping for a new or used car?
We don't believe in tricks.
Treat yourself to good service.
Ask about our low rates for new and used vehicles.

Why Keep Your Accounts in This Local Community Credit Union?

We know Big Box companies make money for their investors. They do it in a variety of ways. For example, they "farm out" jobs to other states and even countries. Ask yourself, "How does this benefit our local economy?" It doesn't. When PWFCU needs additional staffing, we hire individuals from within our local community.

Have you been on the phone with a Big Box company and after waiting on hold "forever" found your associate sounds like he or she is reading from a script? Our staff is knowledgeable and will provide you with, "in house", individualized and prompt help. Accounts with the Port Washington Federal Credit Union have better rates on all Loans, plus many services are free with your Savings Account. Instead of jumping from one financial institution to the next to save a few percentage points, in the long run, keeping your cash here, will save more than elsewhere. Plus, if you are tired of "playing the stock market", all our Account(s) are federally insured.

Now you know a few of the many reasons why we say: "We are your community's credit union and we are here for you."

It is not a nasty trick. It is an annual event.
Tax Season will be here quicker than you can believe it is possible!

A conversation with your tax accountant need not be viewed as a visit with "Halloween's grim reaper." Depending on your previous planning, you will either "pay out" or get a tax return. We suggest the following: start organizing your tax papers now.

October Happenings

Update your Beneficiary Cards

Why is it important to update your address and Beneficiary Cards? People move, have babies, marry, divorce and eventually pass on. Unless you make your own updates you are leaving it to the Federal Government to decide where your money will go.

Ask our staff to help you change your forms.



Control your Time and Become Better Organized

Does the start of Daylight Savings Time make you feel like you are missing hours of sleep? We understand. While we can't give you more zzzzzs we can help you organize your money and stay connected to your cash. Sign up for PWFCU OnLine banking service. Add to it our free Direct Deposit and Bill Pay features.

PORT WASHINGTON FEDERAL CREDIT UNION RATE CHART

OCTOBER 2020 RATES

• 516 883-3537 • Fax 883-3513 • MSL line 883-3438 • www.pwfcu.org •

Share Type	Average Daily Balance	Rate	Annual Percentage Yield (APY)
Regular, FOR BALANCES UP TO \$250,000.00 FOR BALANCES OVER \$250,000.00		.59 .25 %	.591 .250 %
Trust Accounts VACATION, HOLIDAY CLUB: \$10 fee for early withdrawal from Holiday Club			
IRA-Regular, Roth & Educational		.59	.591 %
Loan Type	Maximum \$	Term	Rate
Unsecured/Overdraft/ Debt Consolidation	Based on ability to repay	Rates start as low as	6.9 %
Share Secured	Amount on deposit	48 Months	3.89 %
New Car	Rates start as low as 3.9 %		
Used Car	Rates start as low as 4.5 %		
Home Equity	Variable Up to 70% OF HOME VALUE	180 Months	CALL FOR RATES
Adjustable Rate Home Equity Loan and 2 Year Adjustable Rate Mortgage Rate starting at	2.95 for A Credit		

You can take advantage of the protection of NCUA Deposit Insurance, the friendly service of your Port Washington Federal Credit Union and still enjoy a really high yield.



Over time your money will grow with this local Credit Union. Thank you for inviting your family, friends and co-workers.



FOR MORE INFORMATION CALL: 516 883 3537